



CITY OF MANDEVILLE

ONGOING CAPITAL PROJECTS UPDATE
NOVEMBER 21, 2024

MANDEVILLE LAKEFRONT WETLANDS RESTORATION

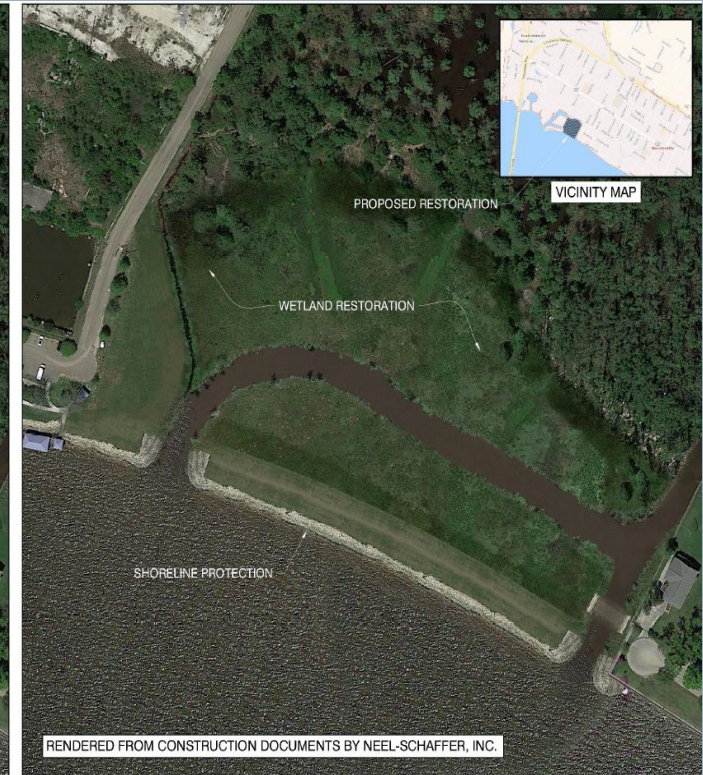
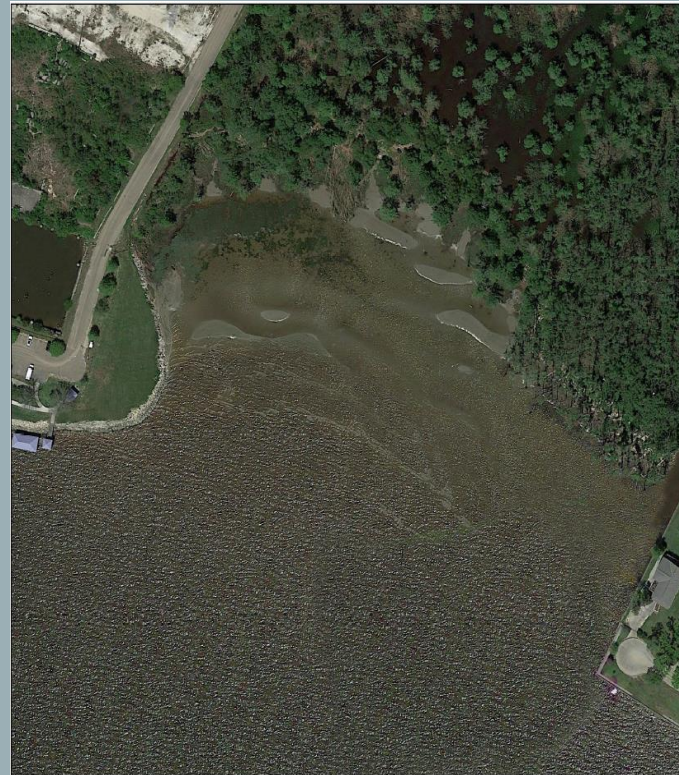
Description: The project will include an armored berm and the restoring of the wetlands in the only “non-hard” shoreline portion on the east side of Mandeville.

Status: \$1M added for FY '25. Project under final design. 6 month construction duration.

Estimated Total Construction Costs: \$4.2M (base bid of armored berm). +\$1.7M (alternate bid of marsh creation).

Engineer: Neel-Schaffer

Estimated Design Completion: February 2025



WASTE WATER TREATMENT PLANT EFFLUENT PIPELINE EXTENSION

Description: The project is to extend the wastewater treatment plant effluent pipeline westward into the Tchefuncte Marsh wetland complex.

Status: Principal currently working on the existing conditions modeling for the Marsh Hydrology Study.

Construction Cost: \$1,178,620.00

Engineer: Principal

Estimated Study Completion: May 2025

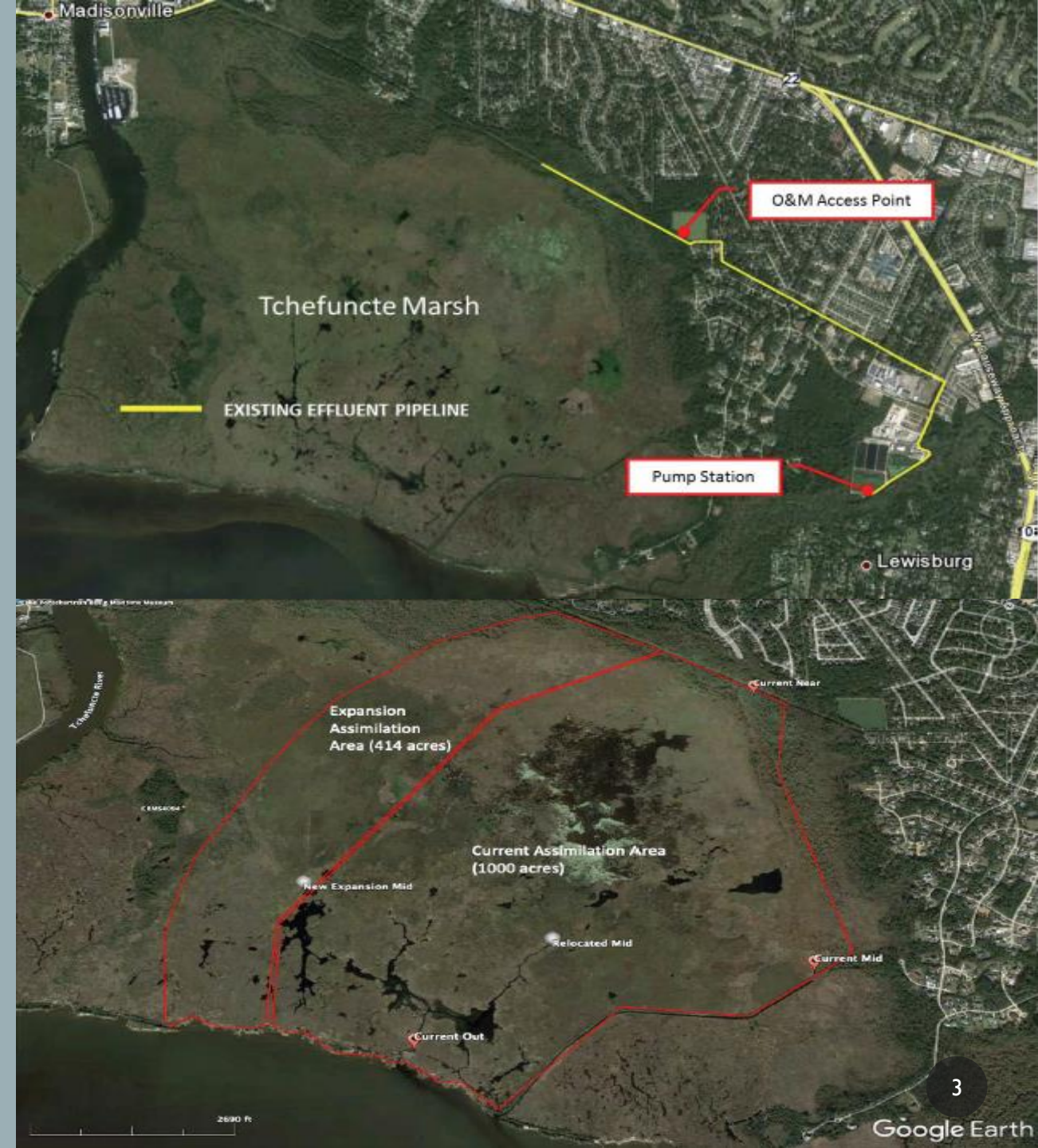


Image from Google Earth



US 190 STREETScape & ACCESS MANAGEMENT

Description/Scope: Stage 0 feasibility and traffic study for DOTD improvement alternatives for US 190 from E Causeway Approach to Jackson Street. Study will investigate access management, U-turns, J-turns, roundabout, etc.

Status: Working with DOTD on approval for Existing and No-Build Analysis Submittal. Once complete, NSI can move forward with Alternatives Analysis. Public meetings will be coordinated at the end of the Alternatives Analysis period.

Estimated Study Cost: \$475,000.00

Engineer: Neel-Schaffer, Inc.

Estimated Study Completion: Fall 2025 (dependent on DOTD reviews)

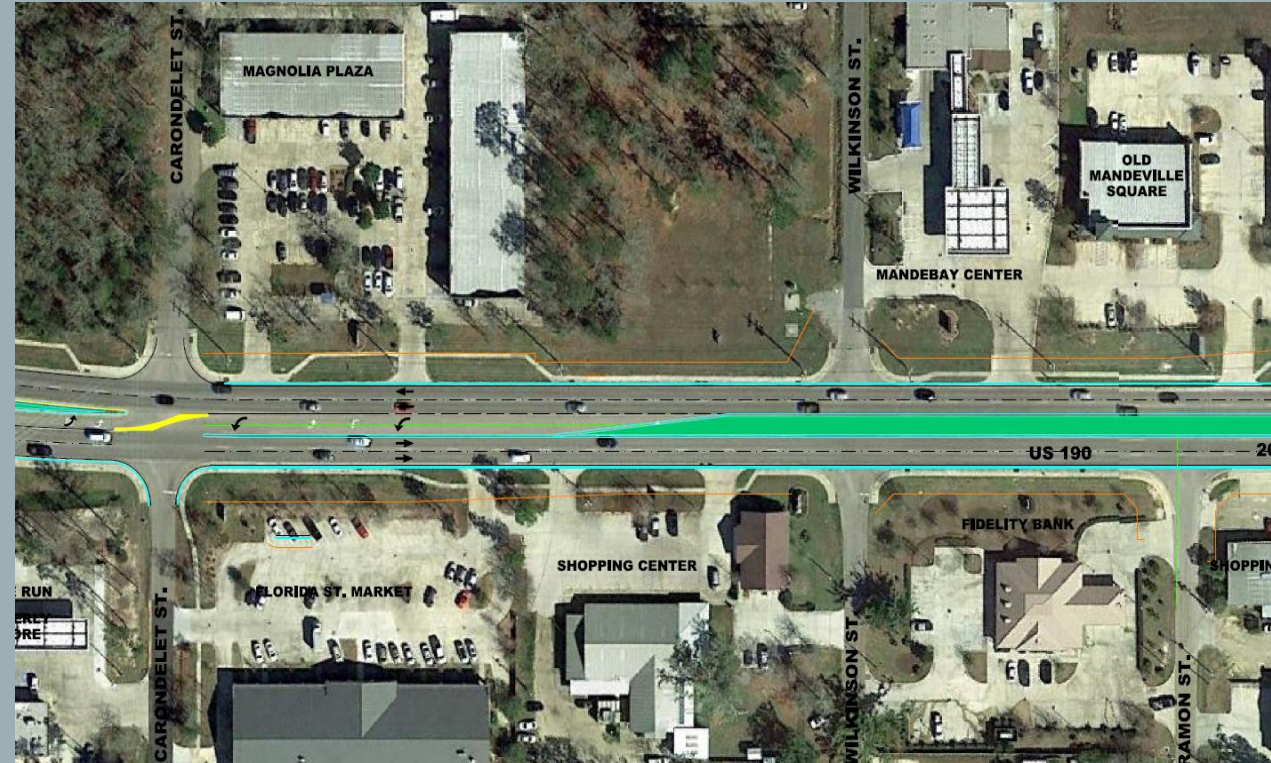


Image from Forte & Tablada



SHORELINE PROTECTION AND FLOOD CONTROL EAST

Description: Evaluation of lakefront area from a wholistic approach that will include grey and green infrastructure improvements flood control.

Status: Living Shoreline Study Grant Application Approved by Lake Pontchartrain Basin Restoration Program (100% Funding). Scope of Study focuses on reducing wave energies impacting the seawall and enhance habitat in the area

Engineer: Neel-Schaffer (Living Shoreline)

T Baker Smith (LiDAR)

Estimated Completion: Awaiting funding



Image from Neel Schaffer



SHORELINE PROTECTION AND FLOOD CONTROL WEST

Description/Scope: Project design includes construction of a breakwater/living shoreline and marsh fill to rebuild and protect the Tchefuncte Marsh from erosion. Limits include just west of Tchefuncte River to Lewisburg

Status: Volkert has conceptual layouts and preliminary plans in progress. Coordinating with St Tammany Parish and CPRA on alternatives.

Estimated Total Construction Costs: Early estimated construction costs will be \$13-15M and will require major outside funding and/or phasing.

Engineer: Volkert, Inc.

Estimated Completion: Dependent on funding.



Image from Volkert Inc



LA HWY 22 DRAINAGE PROJECT

Description: Hwy 22 corridor from Dalwill Drive to US Hwy 190 and down N Causeway will receive drainage improvements to eliminate repetitive flooding in area. Scope includes installation of large diameter pipe to close existing ditches and convey water via N Causeway Blvd to Bayou Chinchuba.

Status: Kyle has provided final stamped plans along with OPCC for Facility Planning and Control (State) approval. Awaiting final permit approval from DOTD.

Estimated Total Cost: \$12.8M

Engineer: Kyle Associates

Estimated Construction Completion: May 2026



Image from Google Earth

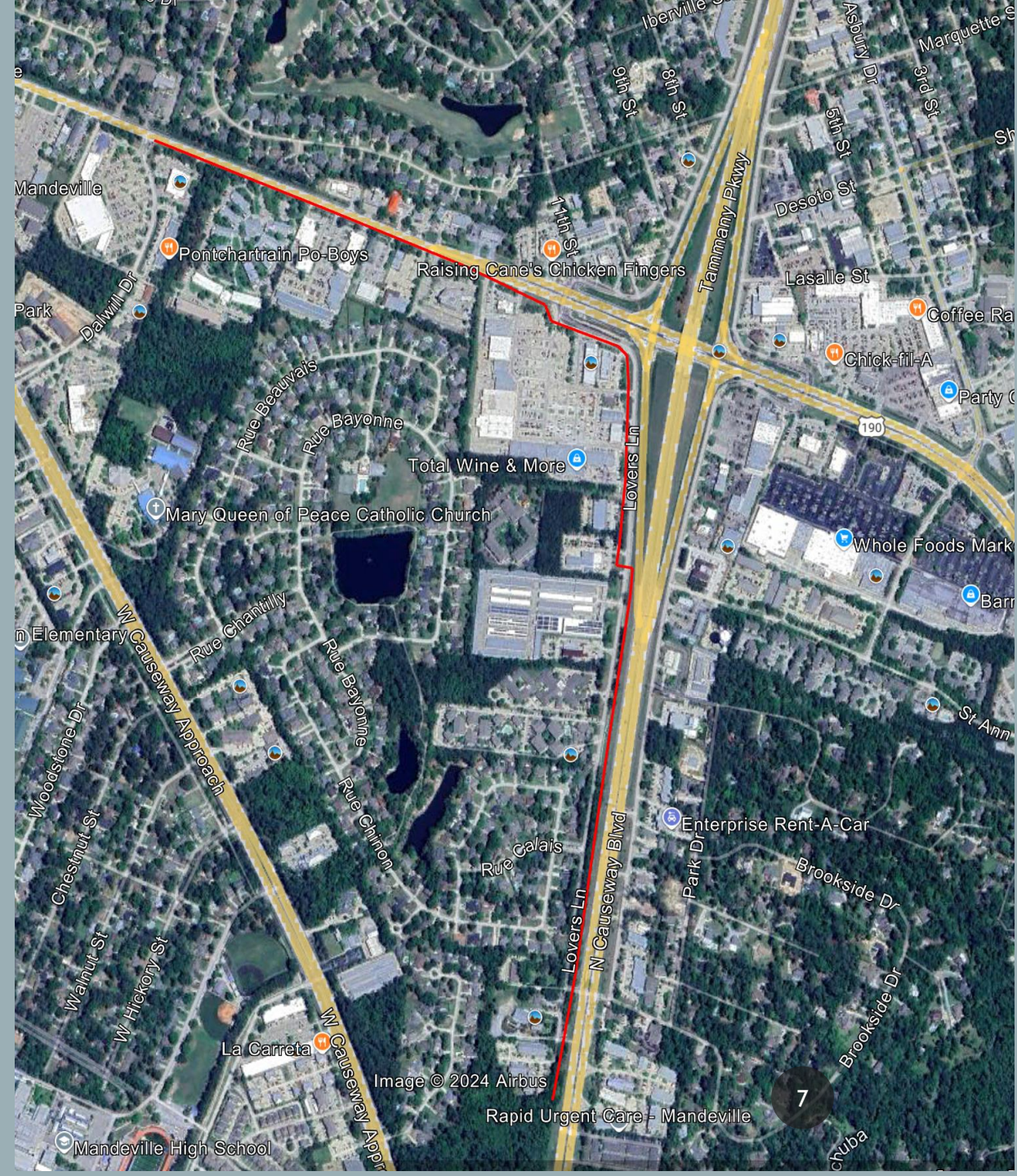


Image © 2024 Airbus

Rapid Urgent Care - Mandeville

7

SSSES REHAB DESIGN



Description: Contract for drain line, sewer cleaning, structure evaluation services and sewer system evaluation services. Work items include CCTV inspections of mainlines and smoke testing of piping in order to diagnose required repairs.

Status: Services agreement ongoing annually for services.

Phase I completed. Consisted of services to Lafayette St and Roman St.

Phase II is next and will consist of services to Villere St, Adair St, Carroll St, Oak St and Coffee St.

Phase III to consist of Rosewood, Oakwood, and US 190.

Estimated Total Construction Costs: Yearly budgeted

Engineer: Digital and Compliance & EnviroSystems

Estimated Completion: Continuous

Image from Compliance & EnviroSystems



CITY HALL & COUNCIL CHAMBERS ADDITION/RENOVATION

Description: Project scope may include bringing City Hall into ADA compliance, reorganization of functional space, and addition of separate Council Chambers.

Status: Contract amendment required for Greenleaf Architects to continue design

Estimated Total Cost: \$4.1M New Council Chambers Only (Phase I)+ \$3.5M City Hall Renovations (Phase II/Alternate)

Architect: Greenleaf Architects

Estimated Completion: Dependent on Contract/Funding.



Image from Waymarking.com





HARBOR GAZEBO PAVILLION IMPROVEMENTS (BAYOU CASTINE)

Description: Design and construction for the restoration of the painting, cleaning, replacing rotten wood at the Harbor Gazebo Pavillion, trenches and shoring for electrical at the Harbor, realignment of sidewalks at Lakeshore and Jackson.

Status: Street paving details and drainage currently under review. Once completed, project can go to bid then construction.

Estimated Total Construction Costs: \$430k

Architect: KVS Architecture

Estimated Construction Completion: August 2025



OLD GOLDEN SHORES NEIGHBORHOOD DRAINAGE

Description: Modeling, Survey and Design for drainage improvements in the Old Golden Shores Neighborhood, which focuses on the outfall canal improvements and associated internal drainage.

Status: Modeling and report/recommendations complete. Preliminary design layout has begun and on hold for Phase I (Esquinance St. to the Lake). Awaiting final coordination with Legal on right-of-way at Lake outfall. Minor improvements north of Monroe have been identified.

Engineer: High Tide Consultants

Estimated Construction Cost:

Phase I: \$930,180.00 (Lake to Esquinance - Construction period 9-12 months)

Phase II: \$970,266.00 (Esquinance to Copal)

Phase III: \$1,286,580.00 (Copal to Elm)

Total Cost: \$3,187,026.00



Image from High Tide Consulting



OLD MANDEVILLE WATERLINES

Description: Design project for a number of waterlines within Old Mandeville along Montgomery, Jackson, Livingston, Monroe and Madison that are aging/undersized to improve drinking water quality and service.

Status: RCL has laid out alignments of the new waterlines and set valve locations. Preliminary design will be complete upon markups of existing waterlines by DPW.

Engineer: Richard C. Lambert Consultants

Estimated Construction Cost: \$2.7M

Estimated Design Completion: March 2025

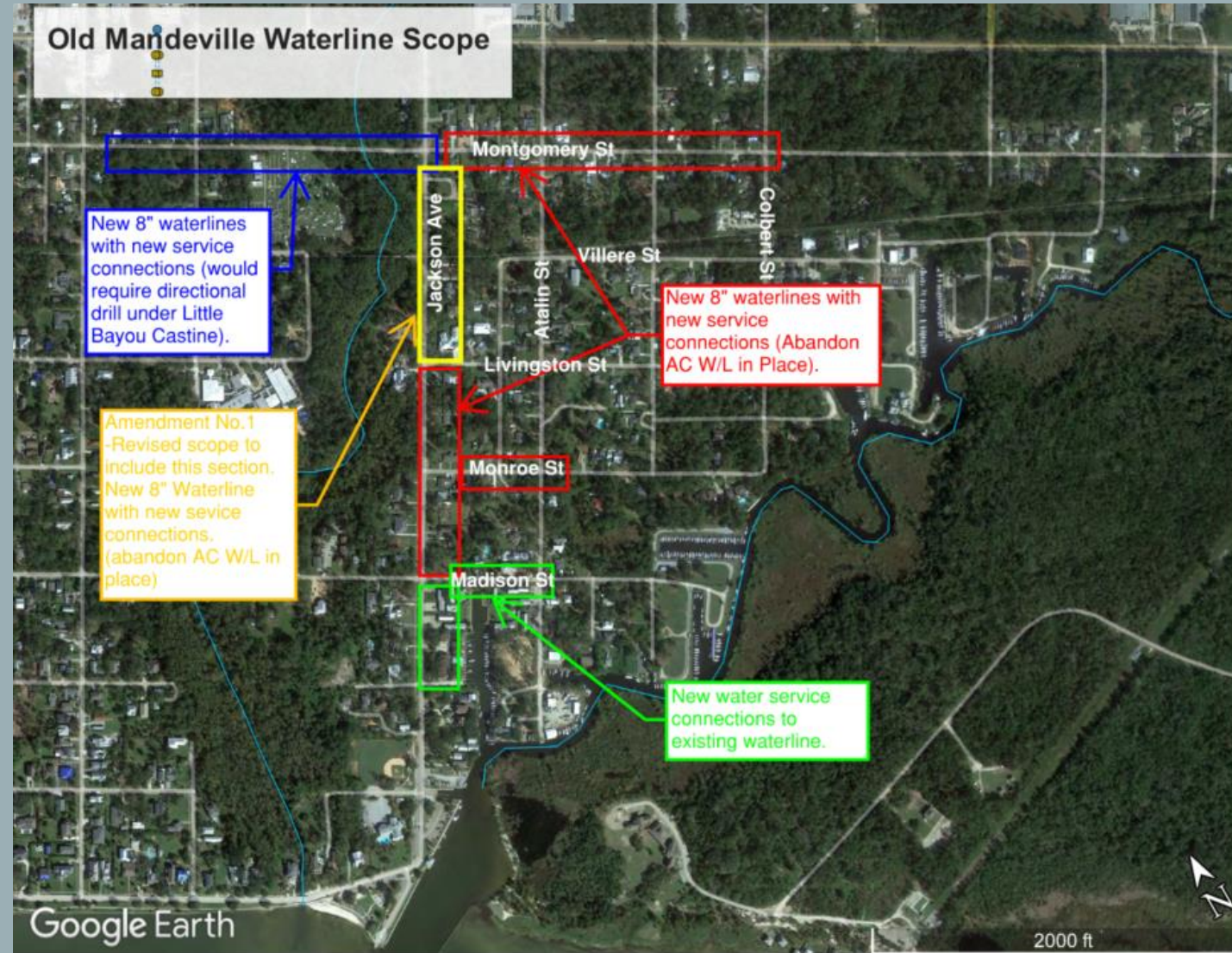


Image from Google Earth

POLICE STATION UPGRADES

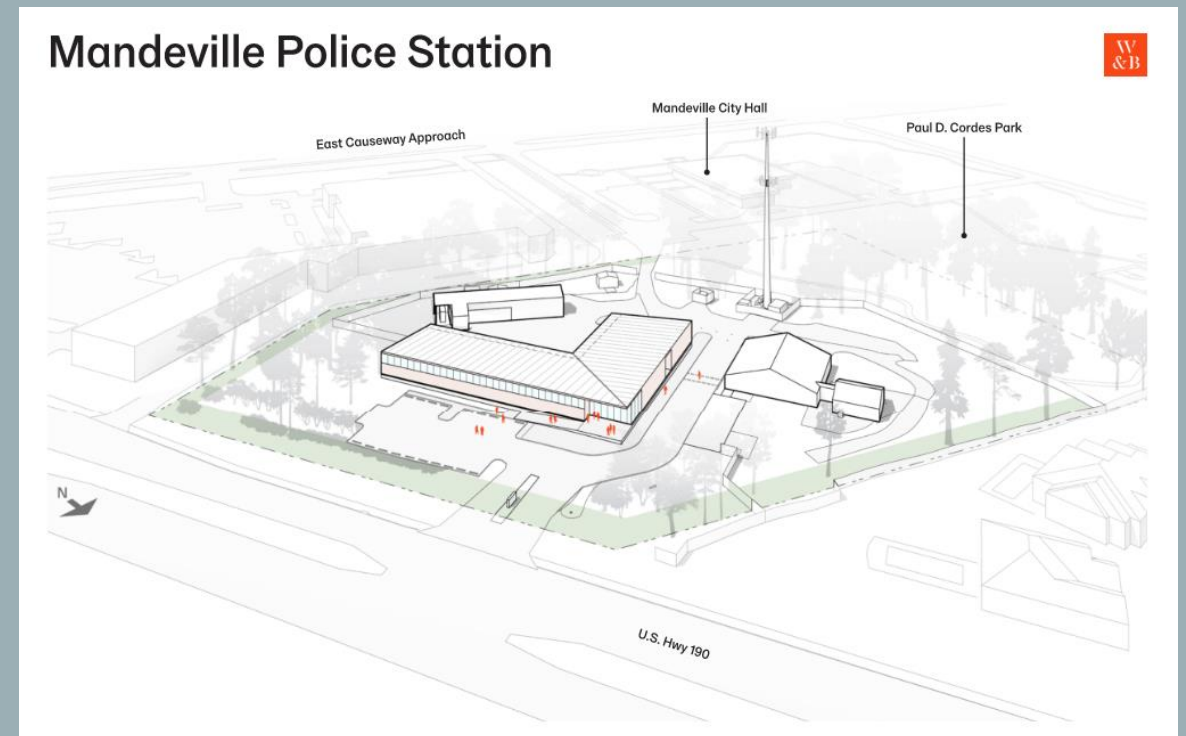
Description: Improvement of the existing 40+ year-old structures on the Police Department Grounds with interior/exterior renovations, additions, or possible new building(s).

Status: Currently in Schematic Design phase. Program confirmed with owner/user. Design development to begin March 2025 after completion of schematic design.

Estimated Total Construction Costs: \$8.8M

Architect: Waggoner & Ball

Estimated Completion: TBD dependent on final funding



NEW LAB BUILDING

Description: City's Department of Public Works' Lab Building has been identified for upgrade needs as it's aging. This facility handles all of the City's testing as well as houses employees for natural disasters.

Status: Design currently on hold.

Estimated Total Design Costs: \$207,684.00

Architect: Blitch Knevel

Estimated Completion: TBD



Image from City of Mandeville

SEAWALL REPAIR

Description: Project on the Old Mandeville seawall that consists of steel sheet piling repairs, removal and replacement of concrete cap (w/ reinforcing steel), sealing/grouting, concrete surface protective coating, removal and replacement of concrete splash blocks, and a cathodic protection system. Segment I is from approx. Coffee St. area to Little Bayou Castine, and Segment II is from Galvez Canal to Coffee St. area

Status: Awaiting approval from the USACE for permit application. When received, bid date and design plans will be acquired.

Segment I Construction Costs: \$3.45M

Engineer: BKI

Estimated Construction Completion: October 2025



Image from BKI



GIROD ST. LANDSCAPING & LIGHTING – PHASE III

Description: Final design for construction plans to complete Phase III of the LADOTD project from Montgomery St. to US Hwy 190. Project will complete associated lighting, landscaping, irrigation, and electrical similar to what is currently present on Girod St.

Status: Kyle currently working through DOTD comments related to the electrical scope of work.

Estimated Total Construction Costs: \$300k

Engineer: Kyle Associates

Estimated Design Completion: February 2025. DOTD Letting is anticipated to be the second quarter of 2025.



MONROE ST. CORRIDOR STUDY

Description: Corridor study for Monroe St. from W. Service Road to Lamarque St. to assist in decision making for future land uses by creating a baseline study and plan for future build scenarios on developed land. The study will include AM and PM turning movement counts at 30 intersections, average daily traffic counts at 16 locations, field and queuing observations at all locations, growth rate estimations, Synchro/HCS software model development for existing and future year analyses, final technical report with all data, and will be presented to project stakeholders.

Status: Phase 1 for field and data collection of traffic data services currently underway with AM/PM turning movement count map, raw data outputs and field observation sheets of existing conditions. Phase 2 for data & analysis, study & report will follow after completion of Phase 1.

Estimated Total Study Costs: \$130k

Engineer: Vectura

Estimated Study Completion: 2/1/2026



NEW PARK DESIGN

12X PROPERTY



Description: Project to advance the New City Parks project at the 12x Site identified in the recently adopted City of Mandeville Parks & Recreation Master Plan. Project will likely be phased

Status: Professional services agreement to initiate conceptual & schematic design for approval by the City on 11/21 Council Meeting. Current City funding is estimated to be sufficient to complete Schematic Design phase for Park Site & conceptual design for Living Shoreline.

Estimated Total Construction Costs: \$13.8M

Engineer: Waggoner & Ball

Estimated Construction Completion: TBD



NEW PARK DESIGN

Description: Project to advance the New City Parks project at the Landfill (America St.) Site identified in the recently adopted City of Mandeville Parks & Recreation Master Plan.

LANDFILL SITE (AMERICA ST.)

Status: Professional services agreement to initiate design services for approval by the City on 11/21 Council Meeting. Current City funding is estimated to be sufficient to complete Construction Documents phase. With LWCF grant, current funding is estimated to be sufficient to complete Construction Administration.

Estimated Total Construction Costs: \$4.3M

Engineer: Waggoner & Ball

Estimated Completion: December 2026



CARROLL ST. STORM WATER PARK & DRAINAGE

Description: Project to advance the stormwater park project at the Carroll Street Site was identified in the recently adopted City of Mandeville Parks & Recreation Master Plan.

Status: Professional services agreement to initiate H&H, survey, preliminary and design services for approval by the City on 11/21 Council Meeting.

Estimated Total Construction Costs: \$1M

Engineer: Waggoner & Ball

Estimated Construction Completion: September 2026



DESIGN OF SAFETY PROJECTS IDIQ

Description: This project scope will consist of providing design and other necessary professional engineering services on a Task Order basis for the implementation of roadway infrastructure and operational safety countermeasure improvements with an emphasis on the corridors and intersections evaluated under the previously completed Safety Study project.

Initial Task Orders developed include:

- US 190 @ Starbucks Crossing,
- US 190 @ LA 22 (Four Corners) Medians Access Management Study
- E Causeway Approach @ Florida Extension/Cambronne Realignment
- Skipper Drive Safety Analysis

Status: Agreement for professional services with Neel-Schaffer placed on 11/21 Council Meeting for approval.

Estimated Total Construction Costs: TBD per Task Order (\$300k max professional services)

Engineer: Neel-Schaffer, Inc.

Estimated Design Completion: 3 year contract



LIFT STATION 28, LIFT STATION G & LIFT STATION H

Description: Rehabilitation of the lift stations at LS 28 (Hwy. 22 by Roquette Lodge), LS G (Castine Point) and LS H (Hermitage on Lake Subdivision on Massena Street). Scope includes remove and replace internal components of the wet well, upgrade control panels, install new wet well coating, and etc.

Status: Agreement for design services with GIS Engineering placed on 11/21 Council Meeting for approval.

Estimated Total Construction Costs: \$1.14M

Engineer: GIS Engineering

Estimated Completion: Estimated Mid-Late 2026



Image from Digital Engineering of LS 28



MANDEVILLE DRAINAGE IMPROVEMENT PROJECTS



FONTAINEBLEAU SUBDIVISION

Description: Drainage improvements for the Fontainebleau Subdivision. To be divided into five different phases + Pond Erosion Project. Phase I (Purple shade) Portion of Phase II, and Pond Erosion have been completed.

Status: Developing scope for drainage improvement recommendations for subsequent phases.

Estimated City Budget: \$960k

Engineer: Digital Engineering



Image from DE & Google Earth



MANDEVILLE DRAINAGE IMPROVEMENT PROJECTS (CONT.)

BEAU RIVAGE SUBDIVISION

Description: Drainage improvements for the Beau Rivage Subdivision. To be divided into three different stretches. Stretch 1 consists of Moss/Hyacinth (with some work on Jasmine and Azalea), Stretch 2 will be Garden Ave. from subdivision entrance at Beau Rivage Dr. to Hyacinth, and Stretch 3 will be Lotus Ln and Silver Maple Dr to Beau Rivage Dr.

Status: Developing scope for drainage improvement recommendations, updating model

Estimated City Budget: \$750k

Engineer: Digital Engineering

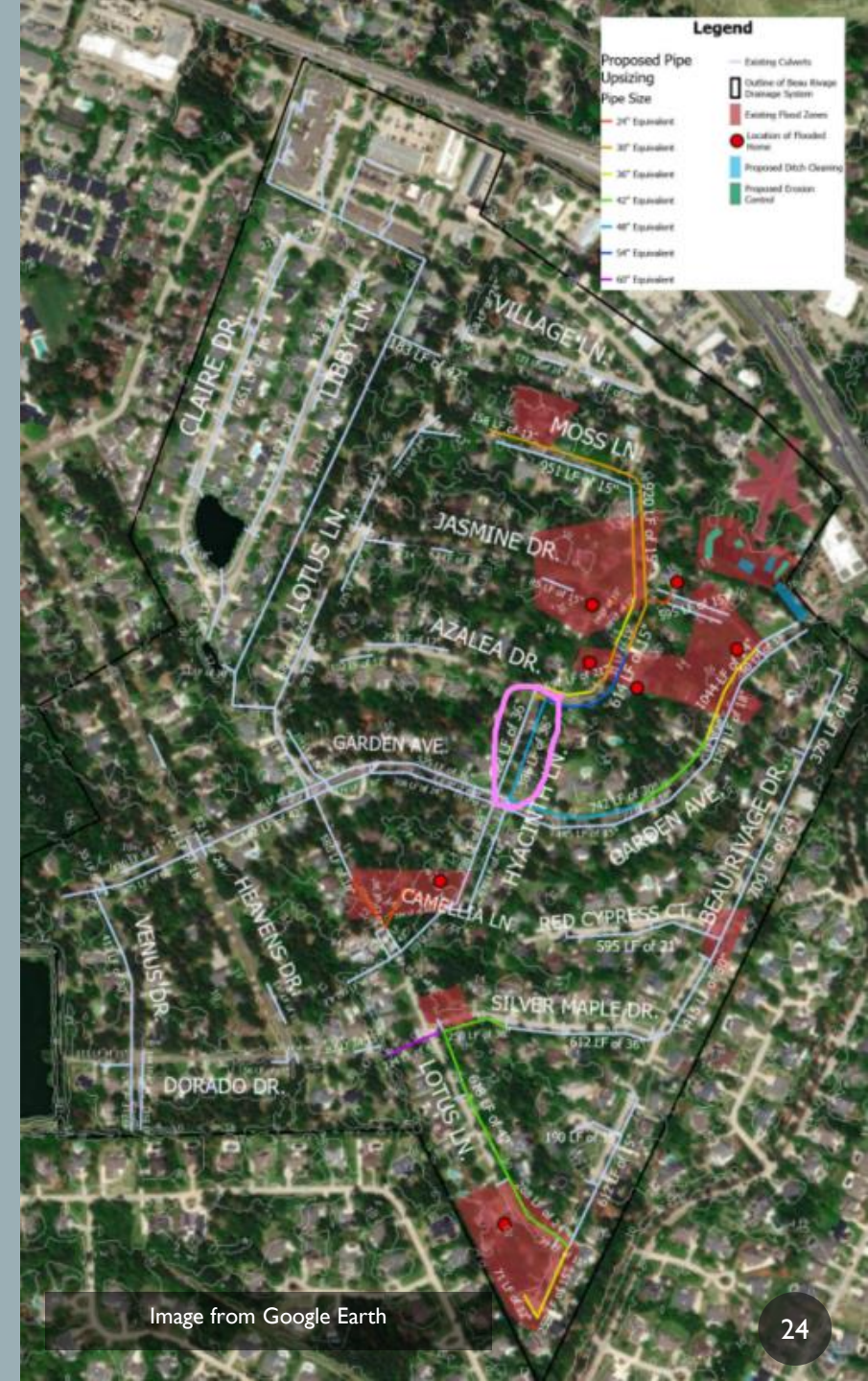


Image from Google Earth



MANDEVILLE DRAINAGE IMPROVEMENT PROJECTS (CONT.)

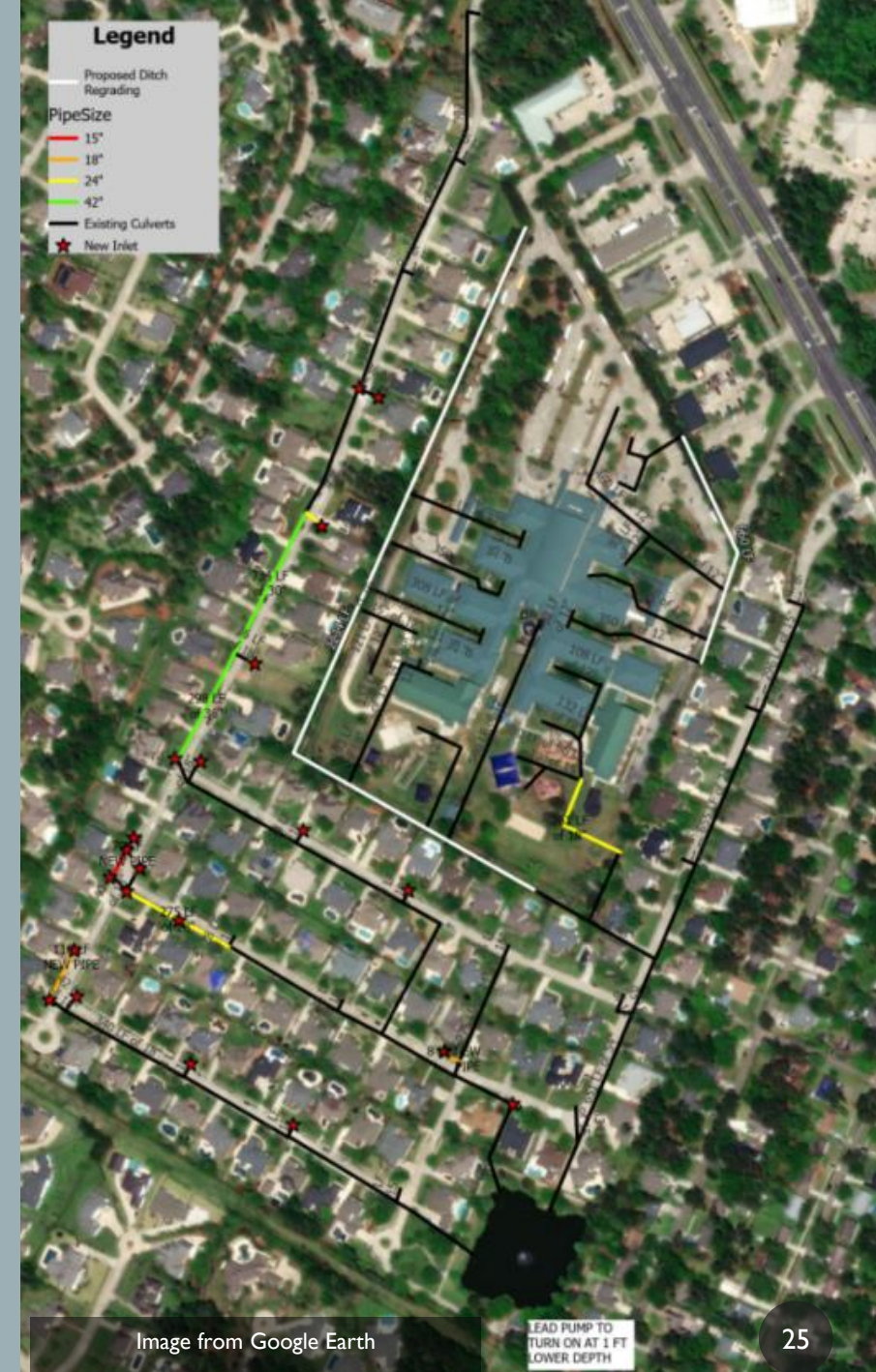
WOODSTONE SUBDIVISION

Description: Drainage improvements for the Woodstone Subdivision. To be divided into three different stretches. Phase I shall include Tara Ln at Mark Smith additional drainage, Phase II shall include Robyn Pl at Mark Smith additional drainage, Ph III shall include Mark Smith north of Bretton Way. Outfall ditch to be continuously maintained

Status: Developing scope for drainage improvement recommendations, and updating models

Estimated City Budget: \$750k

Engineer: Digital Engineering



MANDEVILLE DRAINAGE IMPROVEMENTS PROJECTS (CONT.)

WELDON PARK

LAKEWOOD HEIGHTS

Description: Investigation of internal drainage in the Weldon Park and Lakewood Heights, for a phasing plan on improvements.

Status: Survey elevations are being collected by DPW for internal projects currently being scoped out

Engineer: DPW/Digital Engineering



Image from Google Search



SUNSET POINT FISHING PIER

Description: Replace fishing pier including lighting & underwater service, repair handicap pier damage including walkway, railing & electrical conduits, repair other minor onshore damage to electrical and water service equipment in damages sustained by Hurricane Ida. Project being funded by FEMA grants.

Status: Project currently in design.

Estimated Total Construction Costs: \$3M-\$3.3M (Dependent on piling & decking alternatives approved by FEMA/City.)

Engineer: Principal

Grant Manager & Project Manager: Rostan Solutions

Estimated Design Completion: April 2025
(Depending on FEMA funding assistance approval process)

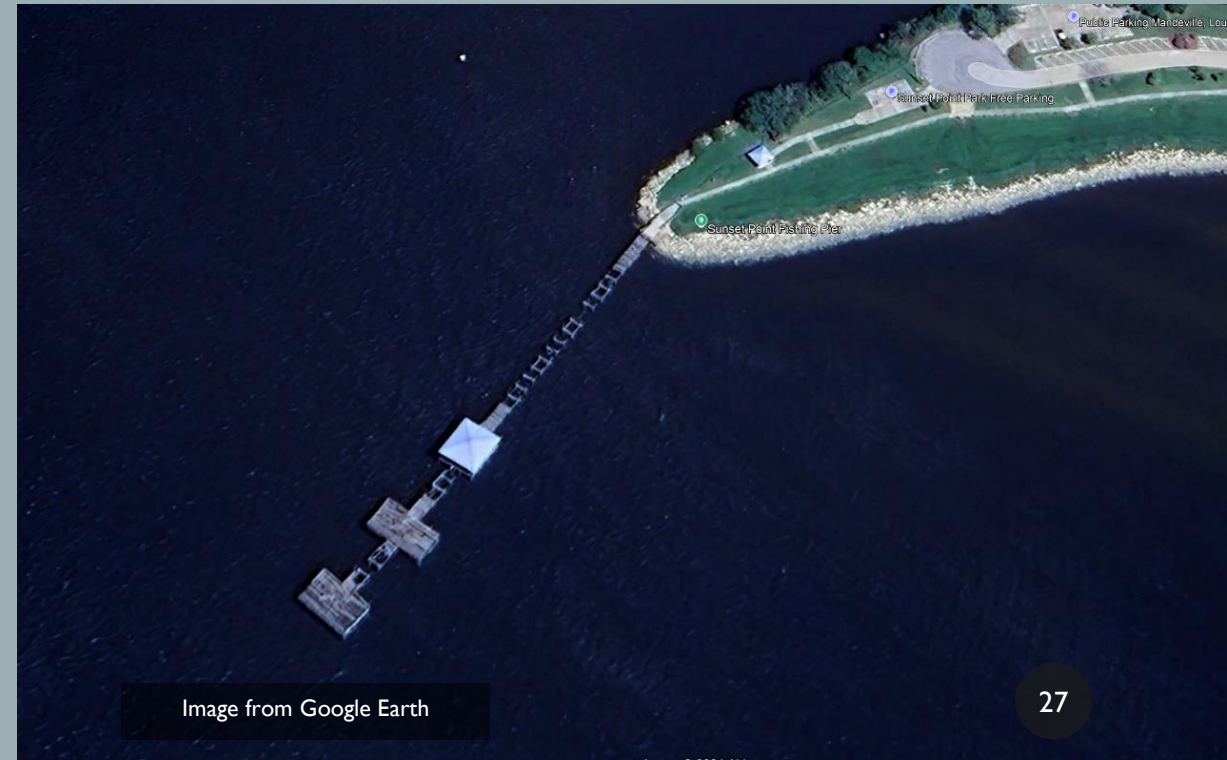


Image from Google Earth