

ADDENDUM NO. 1

TO THE PLANS AND SPECIFICATIONS
FOR THE

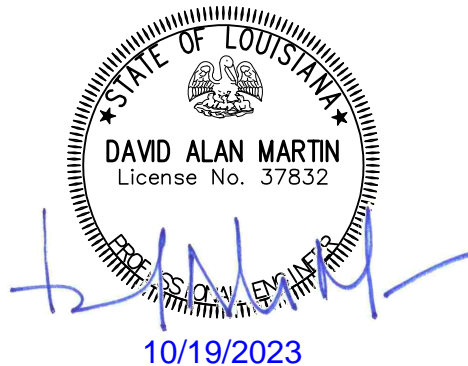
Rehabilitation of Lift Stations No. 3 and No. 39

FOR

City of Mandeville, Louisiana

City Project No. 212.22.002

October 19, 2023



Fairway Consulting + Engineering, LLC
David Alan Martin, P.E.

**ADDENDUM NO. 1
TO THE PLANS AND SPECIFICATIONS
FOR THE**

Rehabilitation of Lift Stations No. 3 and No. 39

FOR

**City of Mandeville, Louisiana
Project 212.22.002**

GENERAL:

This addendum forms a part of the Contract Documents and modifies Specification sections as denoted below. Acknowledge receipt of this addendum in the space provided on the Bid Form. Failure to do so may subject the Bidder to being considered non - responsive. Bidder is responsible to disseminate this addendum to all subcontractors and material suppliers concerned.

This Addendum No. 1 supersedes any contrary or conflicting information in any previously issued addenda. This Addendum shall be part of the Contract Documents. The following items are issued to add, delete, modify, and clarify the Contract Documents. These items shall be part of and shall have full force and effect as the Contract Documents and the cost involved shall be included in the bid price.

Sealed bids will be received until the hour of 11:00 A.M., local time, Wednesday, October 25, 2023, in the office of the Purchasing Agent, City Hall, Mandeville, Louisiana, 3101 East Causeway Approach, Mandeville, LA 70448; for furnishing all labor, materials, supervision, etc., and performing all work necessary to complete the REHABILITATION OF LIFT STATIONS NO. 3 AND NO. 39, CITY OF MANDEVILLE PROJECT NO. 212.22.002, FAIRWAY CONSULTING AND ENGINEERING PROJECT NO. 21-061A; for the City of Mandeville. Bids will be opened and publicly read aloud after 11:00 A.M. in the City Council Chambers, City Hall, Mandeville, Louisiana. Any bids received after 11:00 A.M. will be returned unopened.

ATTACHMENTS

- A1.** Copy of a sign in sheet for the non – mandatory pre – bid conference held on Thursday, October 12, 2023 at the City of Mandeville Department of Public Works at 10:00 A.M.

CLARIFICATIONS

- C1.** Question: Are the requirements of "Build America Buy America" applicable to this project? Answer: The requirements of "Build America Buy America" are not applicable to this project, however, the Technical Specifications do require certain

components to be domestically produced.

- C2.** Question: Who is the existing contractor for the lift station controls? Answer: Station 3 currently operates on a panel produced by Custom Controls Technology (CCT). Station 39 currently operates on a panel produced by TESCO Controls.
- C3. Question:** Are the duct banks on LS 3 necessary from box to box? Would be simpler and cheaper to nipple into each panel from the side. **Answer:** Nipples may be used to make necessary runs between rack mounted equipment. See changes to Contract Drawings.

CHANGES TO CONTRACT SPECIFICATIONS

- SP1. Section 00 00 16 – Supplementary Conditions. DELETE SC-2.03 in its entirety and REPLACE with the following:**

SC-2.03 *Commencement of Contract Times, Notice to Proceed*

Insert the following after Paragraph 2.03.A.

- B. Prior to the assessment of contract time, the Contractor will be allowed thirty (30) calendar days from the date stipulated in the notice to proceed to commence with portions of the contract work including but not limited to assembly periods, preparatory work for materials fabrications, exploratory excavations, or other activities which hinder progress during the beginning stages of construction. Prior to the issuance of the notice to proceed, the OWNER may (but shall not be obligated to) extend the assembly period upon written request from the Contractor justifying the need for additional time.

- SP2. Section 00 00 16 – Supplementary Conditions. DELETE SC-2.03 in its entirety and REPLACE with the following:**

SC-2.04 *Commencement of Contract Times, Notice to Proceed*

Insert the following after Paragraph 2.04.A.

- B. If the Contractor begins regular construction operations prior to the expiration of the assembly period, the assessment of contract time will commence at the time regular construction operations begin.

CHANGES TO CONTRACT DRAWINGS

- D1. DELETE** Sheet 1-E2 and REPLACE with the attached REVISED Sheet 1-E2.



SIGN-IN SHEET

Pre-Bid Conference

City of Mandeville Rehabilitation of Lift Stations 3 and 39

City of Mandeville
Project No. 212.22.002

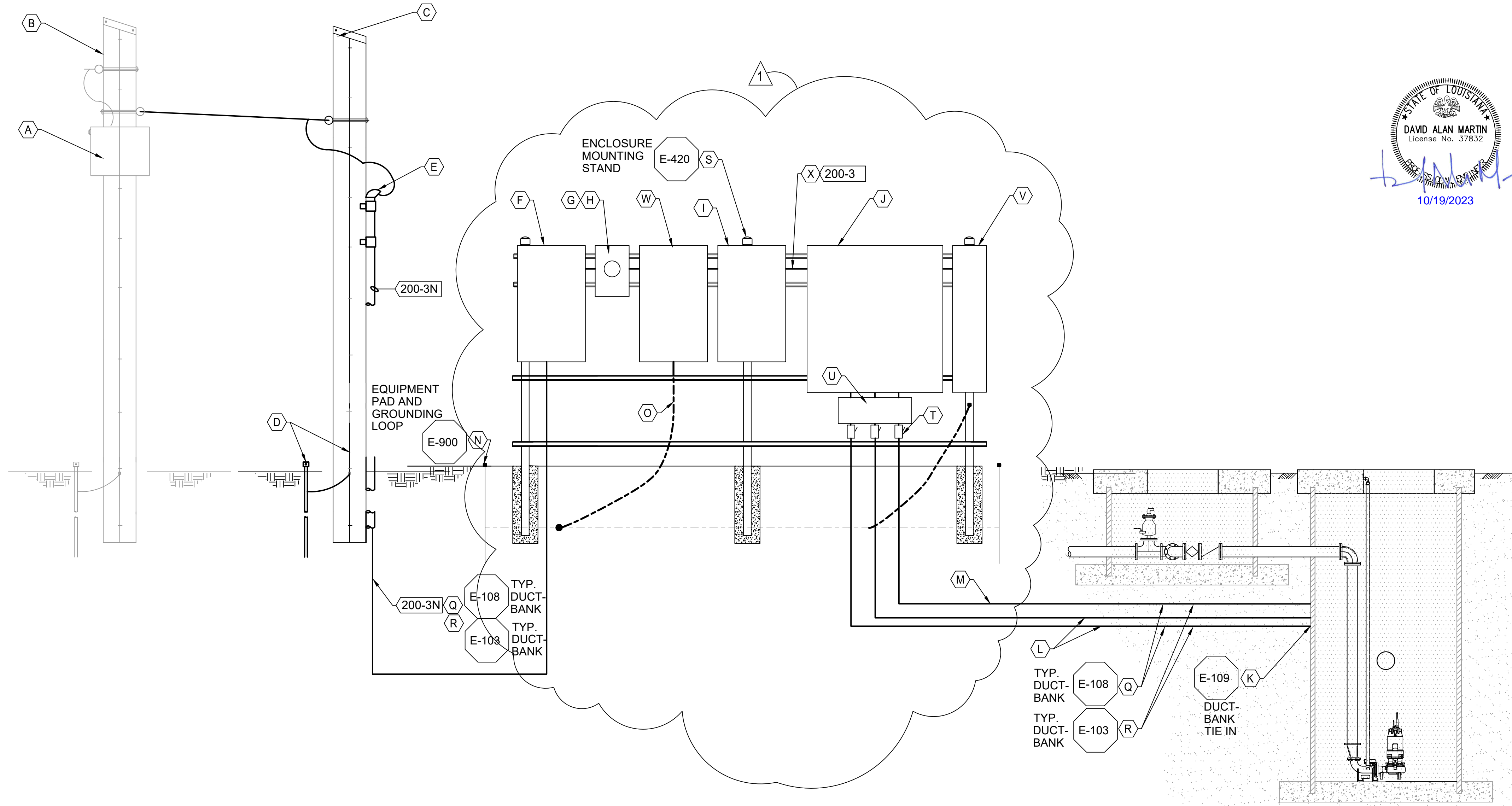
Fairway Job No. 21-061A

DATE / TIME: Thursday October 12, 2023 @ 10:00 AM

LOCATION: City of Mandeville Dept. of Public Works
1100 Mandeville High Blvd
Mandeville, LA 70471

NAME (Print) / REPRESENTING	PHONE # /FAX #	E-MAIL
John Catalano Fairway	504-234-1556	john.catalano@fairwayce.com
Matthew Loker Fairway	985-688-3877	Matthew.Loker@Fairwayce.com
Dane Wise Subterranean	504-717-0374	dwise@subtlc.com
Cole DeLatte United Rentals Pumps	(985) 318-2091	CdeLatte@ur.com
Ryan Baldassaro Gottfried Construction	504-415-0467	ryan@gottfried-us.com
Jeremy Breoux Southern Pipe	985-860-9169	jeremy.breoux@Southernpipe.com

NAME (Print) / REPRESENTING	PHONE # / FAX #	E-MAIL
Cody Daggett L King Company	225-271-1160	cody.daggett@lkingcompany.com
David Muller M+J Civil Construction LLC	504-952-5584	david@mj-civil.com
Richard Kennels Fairway CE	504-669-2489	Richie.C.Fairway@ce.com
JEFF LEEDY FLUID PROCESS & Pumps	504-733-1330	JLE@FLUIDPROCESS.NET
Maura Coker Digital Engineering	936-446-0251	mcoker@dei.net



SHEET GENERAL NOTES

1. REFER TO POWER DIAGRAMS, CONTROL DIAGRAMS, ELECTRICAL SCHEDULES, AND SPECIFICATIONS FOR ADDITIONAL REQUIREMENTS.
2. PORTIONS OF THE WORK ARE TO BE CONSTRUCTED WITHIN A CLASS 1 DIVISION 1 AREA. COMPLY WITH NEC REQUIREMENTS WITHIN THE CLASSIFIED AREA AND FOR SEALING REQUIREMENTS.
3. COORDINATE PUMP CABLE SIZE WITH VENDOR.
4. CONTRACTOR TO PROVIDE COMPLETE GROUNDING SYSTEM COMPLYING WITH ARTICLE 250 OF NEC.
5. PROVIDE MAIN BONDING JUMPER PER ARTICLE 250 OF NEC.

SHEET KEY NOTES

- A. POWER COMPANY TRANSFORMERS, 480 VOLT, THREE PHASE SECONDARY. ASSUMED 200 KVA WITH AVAILABLE SHORE CIRCUIT CURRENT AT TRANSFORMER SECONDARY NOT EXCEEDING 25,000 AMPERES.
- B. POWER COMPANY POLE
- C. REQ'D NEW SERVICE POLE PER POWER COMPANY REQUIREMENTS
- D. REQ'D GROUNDING PER POWER COMPANY REQUIREMENTS
- E. REQ'D WEATHERHEAD
- F. REQ'D LINE SIDE DISCONNECT, NON - FUSED SAFETY SWITCH
- G. REQ'D METER SOCKET PER SERVING UTILITY REQUIREMENTS
- H. METER TO BE PROVIDED BY SERVING UTILITY.
- I. REQ'D MANUAL TRANSFER SWITCH.
- J. REQ'D POST MOUNTED CONTROL PANEL (01 - E - 02)
- K. TIE DUCT BANK TO STRUCTURE PER DETAILS.
- L. 2 EACH CONDUITS FOR PUMP CONTROL/ POWER. SIZE CONDUIT AS TO LIMIT FILL TO 25%
- M. 4 EACH CONDUITS FOR FLOATS. SIZE CONDUITS AS TO LIMIT FILL TO 25%
- N. REQ'D GROUND RING PER DETAILS.
- O. REQ'D NO. 4 AWG TO GROUND RING.
- P. REQ'D NO. 4 AWG TO GROUND RING FROM EQUIPMENT RACK.
- Q. REQ'D DUCT BANK.
- R. PROVIDE DUCT BANK SPACING AND SUPPORT PER DETAILS.
- S. REQ'D CONTROL PANEL RACK PER DETAILS.
- T. PROVIDE CONDUIT TRANSITION BELOW GRADE PER DETAILS. LOCATE SEAL OFF 18" ABOVE GRADE. DO NOT PLACE ANY FITTINGS, BOXES, UNIONS, OR OTHER ACCESSORIES BETWEEN THE SEALS AND GRADE PER NEC.
- U. REQ'D PUMP CABLES JUNCTION BOX, SIZED BY CONTRACTOR.
- V. REQ'D COMBINATION PANELBOARD/ TRANSFORMER.
- W. REQ'D FUSED MAIN DISCONNECT WITH 200 A FUSE (SERVICE ENTRANCE RATED)
- X. CONTRACTOR MAY USE NIPPLES FOR RUNS BETWEEN RACK MOUNTED EQUIPMENT.

E			
D			
C			
B			
A	10/19/23	DAM	ADDENDUM 1
REV	DATE	BY	DESCRIPTION

SCALE
NO SCALE

WARNING
IF THIS BAR DOES NOT MEASURE 1" THEN DRAWING IS NOT TO SCALE

DESIGNED D MARTIN/M LOKER
DRAWN D MARTIN/M LOKER
CHECKED J CATALANOTTO

BID DOCUMENTS - AUGUST 2023
ANY PRINTS NOT BEARING THIS STAMP MAY HAVE BEEN PRINTED PRIOR TO ADVERTISING AND CANNOT BE CONSIDERED AS CONSTRUCTION DOCUMENTS.



REHABILITATION OF LIFT STATIONS 3 & 39

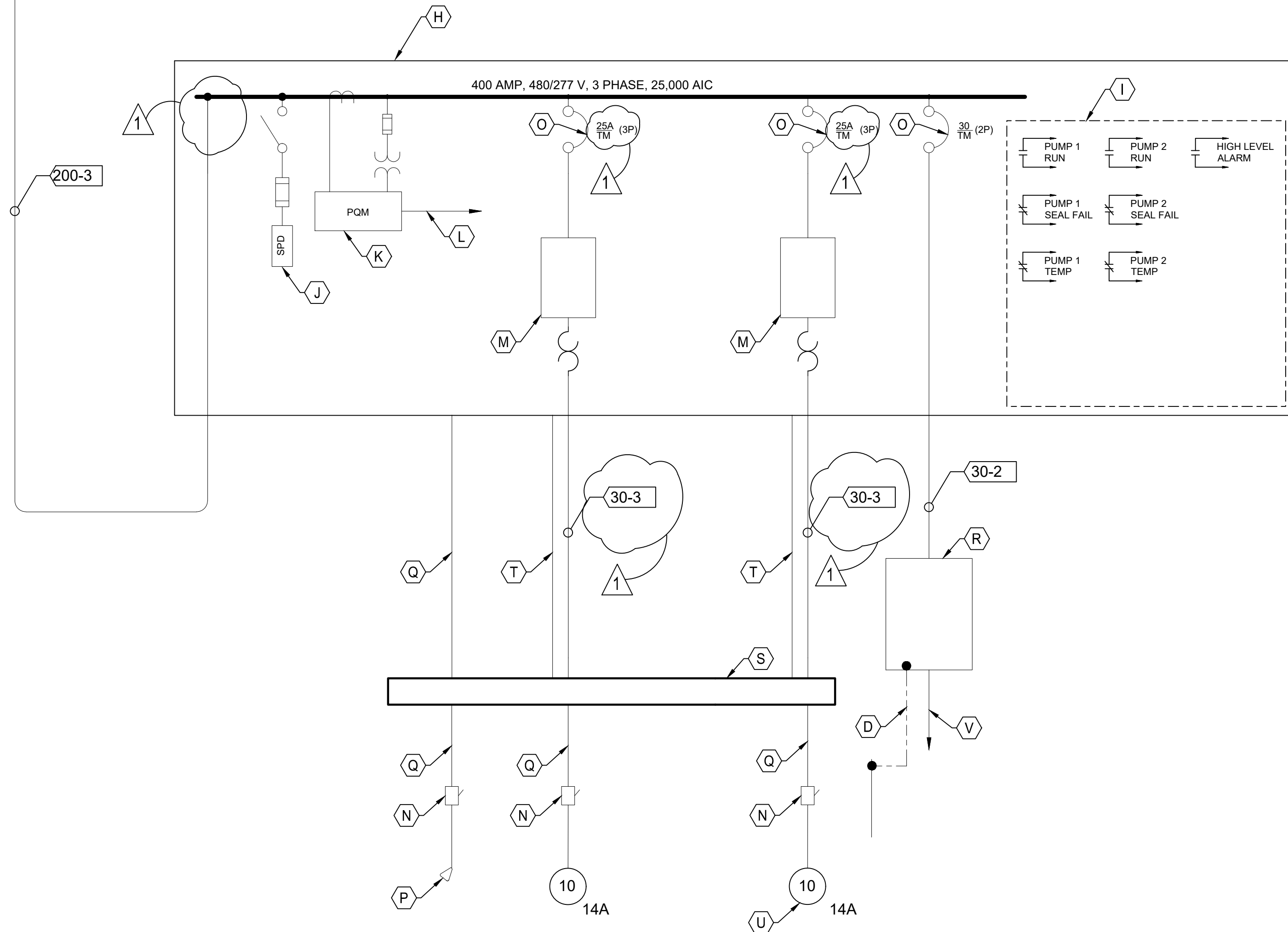
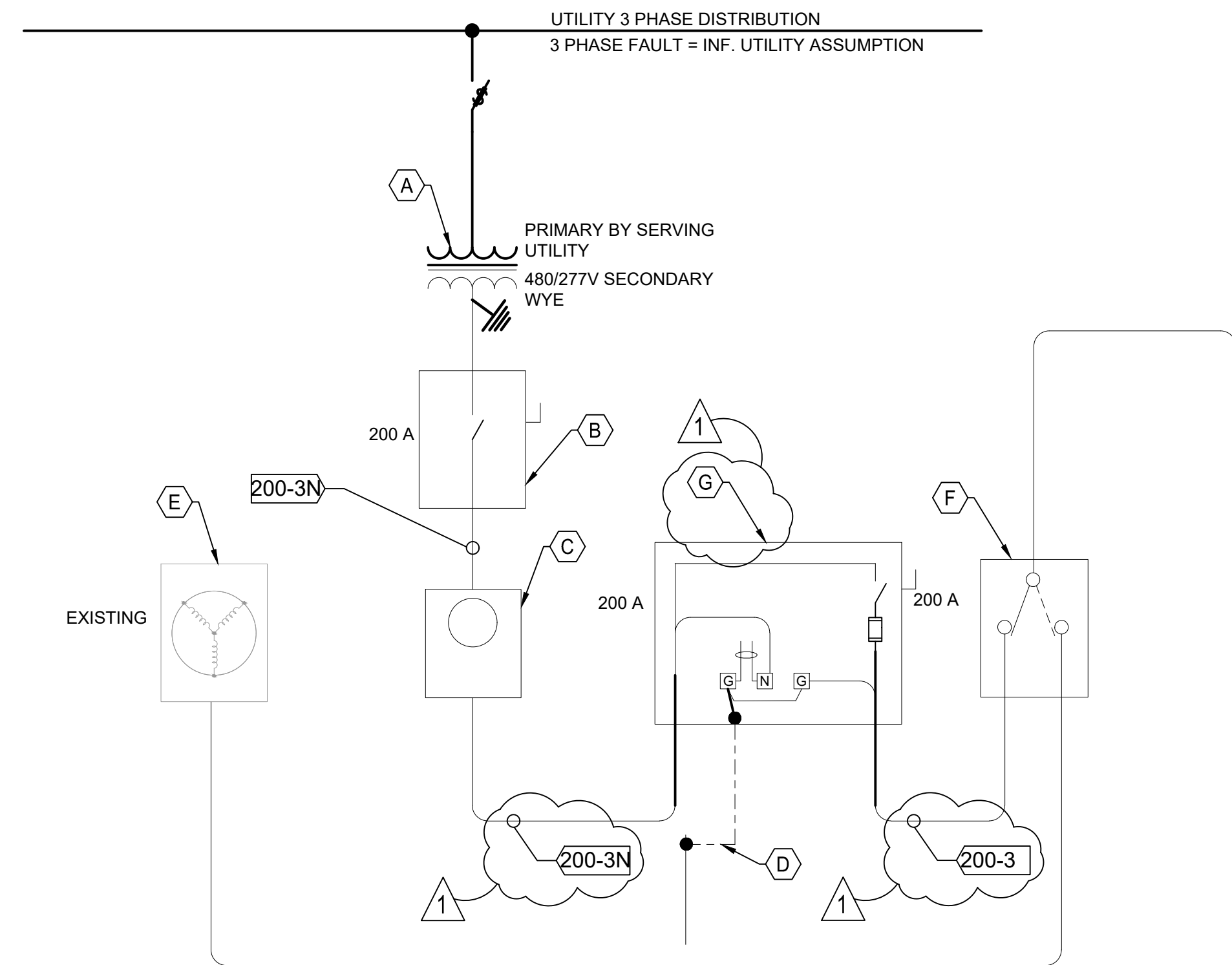
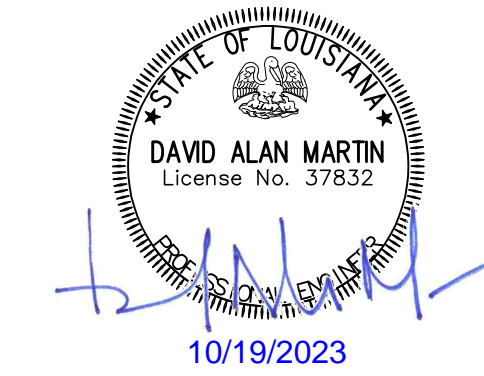
RISER DIAGRAM - LS 3
CITY OF MANDEVILLE, LOUISIANA
SHEET 1-E2
FCE 21-061A

SHEET GENERAL NOTES

1. REFER TO ONE RISER DIAGRAMS, AND PUMP CONTROL PANEL ONE LINE DIAGRAMS FOR ADDITIONAL REQUIREMENTS.
2. REFER TO SPECIFICATIONS FOR ADDITIONAL REQUIREMENTS & CONDUIT.
3. VERIFY PRIMARY VOLTAGE AND AVAILABLE FAULT CURRENT WITH SERVING UTILITY PRIOR TO EQUIPMENT PROCUREMENT.

SHEET KEY NOTES

- A. TRANSFORMER BY SERVING UTILITY
- B. REQ'D NON FUSED SAFETY SWITCH (LINE SIDE DISCONNECT)
- C. REQ'D METER ENCLOSURE IN ACCORDANCE WITH REQUIREMENTS OF SERVING UTILITY. METER BY SERVING UTILITY.
- D. REQ'D NO. 2/0 AWG TO GROUND RING
- E. OWNER'S GENERATOR (NOT IN CONTRACT).
- F. REQ'D SAFETY SWITCH (SERVICE ENTRANCE RATED)
- G. REQ'D FUSED MAIN DISCONNECT (SERVICE ENTRANCE RATED)
- H. REQ'D PUMP CONTROL PANEL
- I. REQ'D DRY CONTACTS FOR MONITORING
- J. REQ'D LIGHTING ARRESTOR
- K. REQ'D PHASE MONITOR
- L. TO CONTROL SECTION
- M. REQ'D FULL VOLTAGE NON REVERSING MOTOR STARTER
- N. REQ'D EYS FITTING SEAL OFF
- O. REQ'D THERMAL - MAGNETIC CIRCUIT BREAKER
- P. REQ'D FLOAT SWITCH (TYPICAL OF 4)
- Q. REQ'D MANUFACTURERS CABLE CONDUIT SIZED BY SUPPLIER TO MEET REQUIREMENTS OF NEC
- R. REQ'D 480V - 120V SINGLE PHASE COMBINATION TRANSFORMER/ PANEL BOARD. REFER TO PANEL SCHEDULE SHEET E-2
- S. REQ'D JUNCTION BOX
- T. REQ'D 4 #18 AWG IN 3/4" CONDUIT
- U. REQ'D PUMP MOTOR
- V. REFER TO PANEL SCHEDULE E-2 FOR REQ'D CIRCUITS



REV	DATE	BY	DESCRIPTION
A	10/19/23	DAM	ADDENDUM 1

SCALE	WARNING
	IF THIS BAR DOES NOT MEASURE 1" THEN DRAWING IS NOT TO SCALE

DESIGNED	D MARTIN/M LOKER
DRAWN	D MARTIN/M LOKER
CHECKED	J CATALANOTTO

BID DOCUMENTS - AUGUST 2023
 ANY PRINTS NOT BEARING THIS STAMP MAY HAVE BEEN PRINTED PRIOR TO ADVERTISING AND CANNOT BE CONSIDERED AS CONSTRUCTION DOCUMENTS.



REHABILITATION OF LIFT STATIONS 3 & 39

CITY OF MANDEVILLE, LOUISIANA	SHEET 1-E3
CONTROL PANELS - LS 3	FCE 21-061A